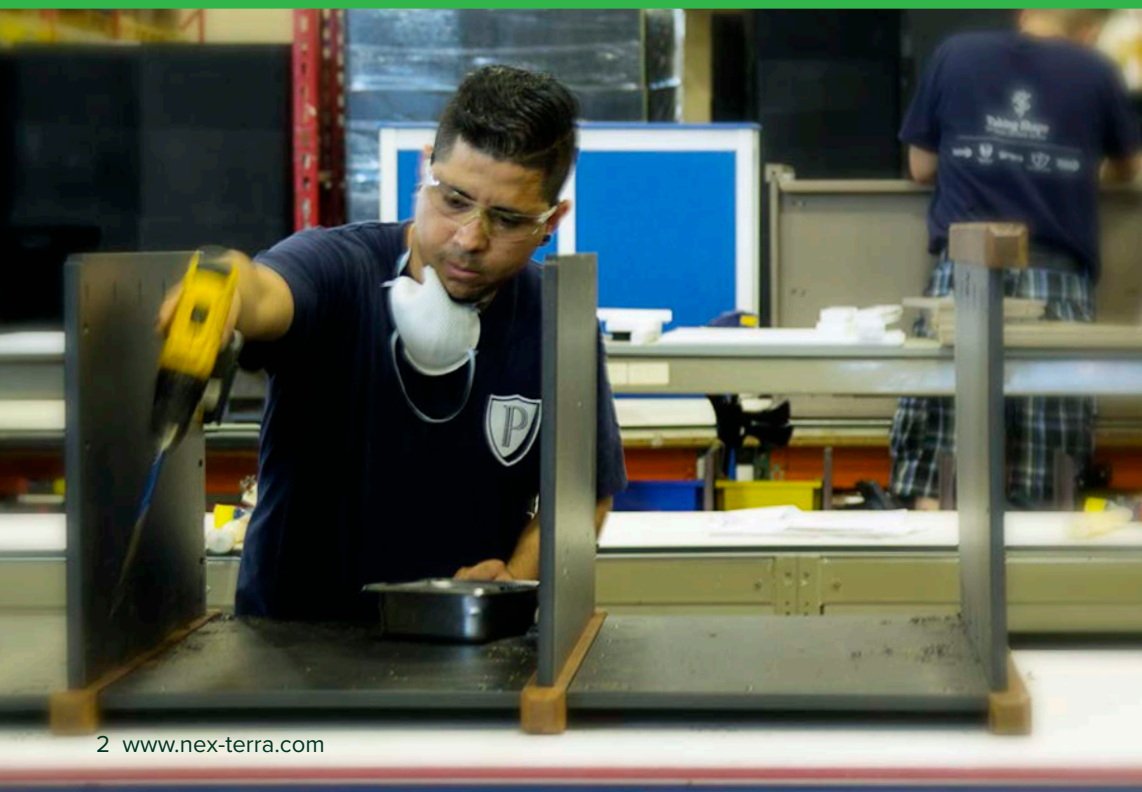




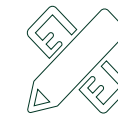
CONFIGURED SOLUTIONS™

Waste & Recycle



ABOUT NEX-TERRA

Nex-Terra is a US manufacturer of customized waste and recycling solutions and site furnishings. Alongside our distributor partners, we brought tailored waste and recycling solutions to the marketplace. Nex-Terra's original designs are easily recognized by their stylized arches, post and panel design, and contrasting colors.



CUSTOMIZATION

Our ability to customize any order allows us to create a solution that will meet your facility's unique needs and requirements.



MATERIAL

Nex-Terra products are constructed from Type-2 HDPE, the purest form of recycled plastic available in the industry today.



SUSTAINABLE MATERIAL

Our waste and recycle bins come standard with the Nex-Terra milk jug. The number on the milk jug identifies how many were reclaimed in its manufacture.



DURABILITY

Our hand-built construction methods, combined with our material's inherent strength and longevity, ensure that our products won't rot, rust, or mold and will outlast all others in the marketplace.



LEED CERTIFICATION

The use of our products may contribute to LEED Certification under MR 4.1 and MR 4.2.



NEX-TERRA PARTNERSHIP

Nex-Terra is a part of a family of brands located in Sussex, WI. Our sales support staff partners with our distributor network to provide unlimited training and support. With access to Nex-Terra's in-house engineering and design teams, we'll provide conceptual renderings, engineer drawings, and unlimited design services to ensure that you receive a product that will meet all of your functional and aesthetic needs.



CUSTOMIZATION GUIDE

Nex-Terra waste and recycle bins excel at meeting unique aesthetic requirements while maintaining the balance of branding, messaging, and recycling success. Our customization process allows you to create a solution that will match your facility's aesthetic requirements, meet your organization's brand standards, and maintain your functional waste and recycle needs.

1

CONTRASTING COLORS

Our signature contrasting color option allows a facility to match their unique aesthetics or brand standards.

2

SYMBOLS

Are essential to clear stream identification, especially in high-traffic areas or when language is a barrier.

3

OPENING IDS

Clearly labeled streams are essential to any waste and recycle station.

4

INTERCHANGEABLE TOPS

Provide flexibility to update waste streams as a recycling program grows.

5

RESTRICTIVE OPENINGS

Allow a facility to tailor their bins to the waste streams they collect, providing one more barrier to cross-contamination.

6

HEADER BOARDS

Allow organizations the ability to further identify waste streams or promote their sustainability program.

OUR CUSTOMIZATION PROCESS

Our unique design process allows an organization to create a customized bin for every area of their facility. Six signature collections and thousands of options ensure that neither aesthetics nor function have to be sacrificed for a successful waste and recycle program.

CHOOSE YOUR COLLECTION AND LOAD DIRECTION

Choose from one of our six signature collections and select between top or front deposit. We recommend a top load bin for indoor applications and a front load bin for outdoor.



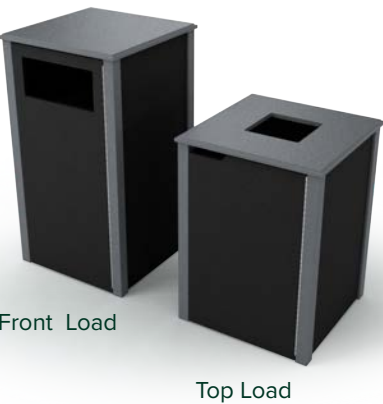
SUPERIOR COLLECTION



ALBANY COLLECTION



SHERWOOD COLLECTION



BERKELEY COLLECTION



HARVEST COLLECTION



PIONEER COLLECTION

CHOOSE YOUR GALLON CAPACITY

Available in seven different capacity options, create a bin with one capacity for each stream or mixed capacities to accommodate collection size.



10 GALLON 22 GALLON 26 GALLON
32 GALLON 38 GALLON
45 GALLON
55 GALLON

CHOOSE YOUR NUMBER OF STREAMS

Customize the number of bin streams to match what is being collected in each area of a facility.



SINGLE DOUBLE TRIPLE QUAD

CHOOSE YOUR ROOF STYLE

Roof style should vary with bin location, we recommend curved or vail for outdoor use.



FLAT CURVED VAIL REVERSE VAIL

CREATE YOUR BIN

WWW.NEX-TERRA.COM/CONFIGURATOR

CHOOSE YOUR BIN COLOR

Our ten standard colors allow an organization to customize their bin to match a facility's aesthetics or brand standards.



CHOOSE YOUR COLOR COMBINATION

Select from one of our five color combination options to match aesthetics or meet design and brand standards.



MONOCHROME



MULTI-COLOR DOORS



CONTRASTING PANELS & TRIM



SPLIT COLOR UNIT



SPLIT COLOR TOP

IDENTIFY YOUR WASTE STREAMS

Employ our three diversion options to clearly identify waste streams and prevent contamination.

1

SYMBOLS



2

RESTRICTIVE OPENINGS



3

OPENING IDS

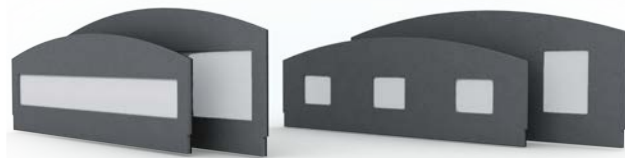


CREATE YOUR BIN

WWW.NEX-TERRA.COM/CONFIGURATOR

ADD A HEADER BOARD

A header board allows for added stream identification or marketing of an organization's green initiatives.



ARCHED HEADER BOARDS



FLAT HEADER BOARDS

ADD BRANDING

Our logo application options allow bins to be branded with an organization's logo, as a sponsorship opportunity, or to build morale around a sustainability program.



OVERLAY LOGO



ENGRAVED LOGO



PLAQUE LOGO

HARDWARE



CASTERS



LOCK



BENT HANDLE



HINGED TOP
New Option



PLASTIC TRAY RACK



STAINLESS STEEL TRAY RACKS

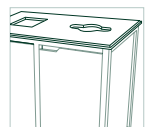
CREATE YOUR
CUSTOMIZED
BIN TODAY



WWW.NEX-TERRA.COM/CONFIGURATOR

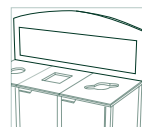


INDOOR BEST PRACTICES



TOP LOAD CONFIGURATION

Ideal for indoor use, a top load bin allows for quick and effective collection.



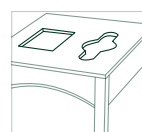
HEADER BOARDS

Increased signage offers an organization the ability to communicate its commitment to sustainability.



VAIL ROOF STYLE

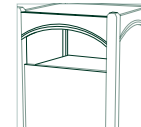
This roof style allows for customized openings, while preventing items from being left on top of the bin.



SPLIT STREAM

Don't sacrifice collection for space. Split stream bins are able to collect multiple waste streams, even in the smallest locations.

OUTDOOR BEST PRACTICES



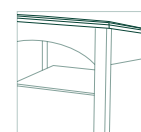
FRONT LOAD CONFIGURATION

Front load bins allow users to identify collection streams from a distance and prevents weather from accumulating in the liner.



CURVED ROOF

This roof style prevents weather and unwanted materials from collecting on top of the bin.



REVERSE VAIL ROOF

Don't have the height for a curved roof? The Reverse Vail style has the same benefits without the added height.



SYMBOLS & RESTRICTIVE OPENINGS

Provide a clear distinction between waste streams and prevent cross-contamination.

nex.terra

SUPERIOR COLLECTION



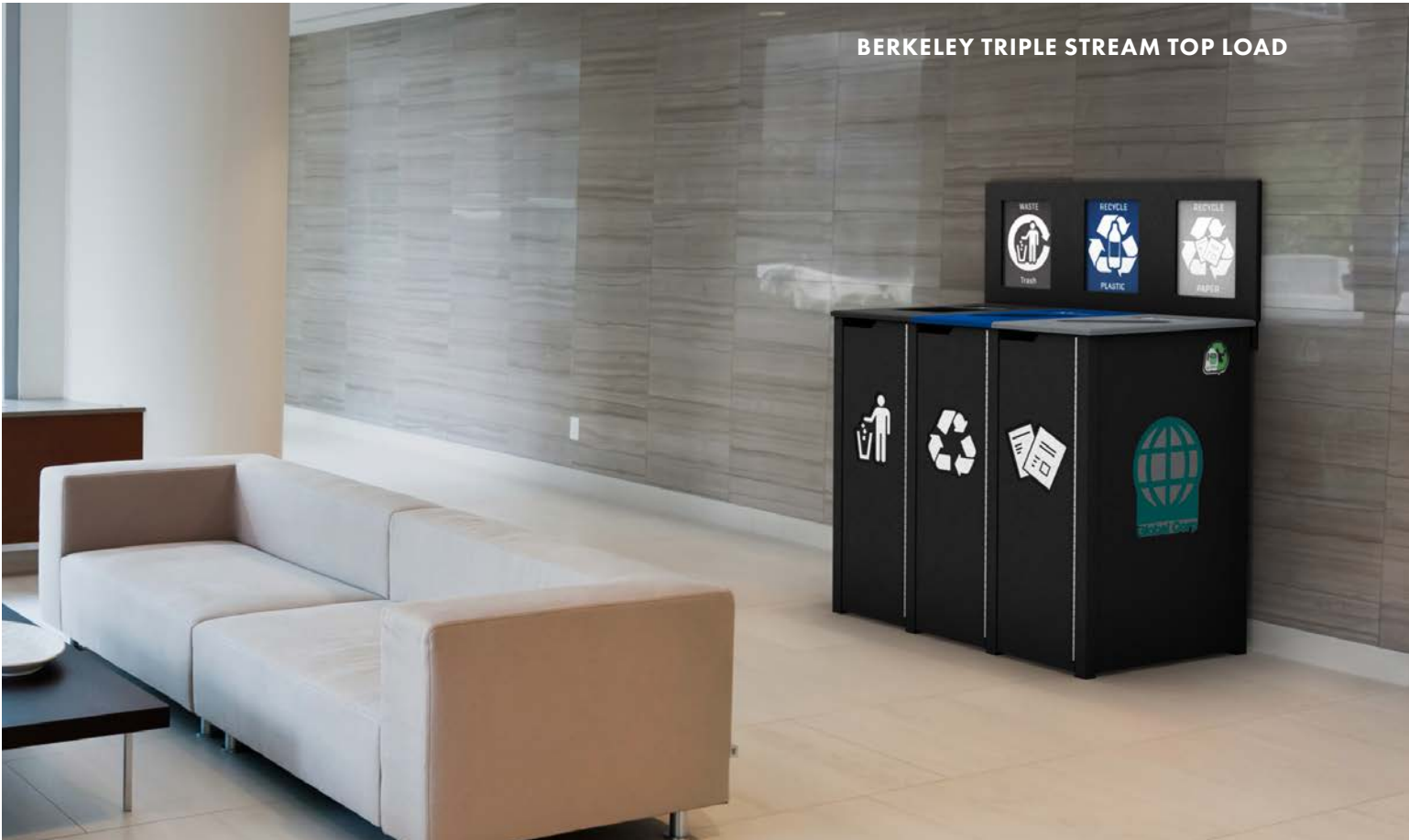
nex.terra

PIONEER COLLECTION



nex.terra

BERKELEY COLLECTION



nex.terra

ALBANY COLLECTION



nex.terra

SHERWOOD COLLECTION



SHERWOOD DOUBLE STREAM FRONT LOAD



SHERWOOD DOUBLE STREAM TOP LOAD



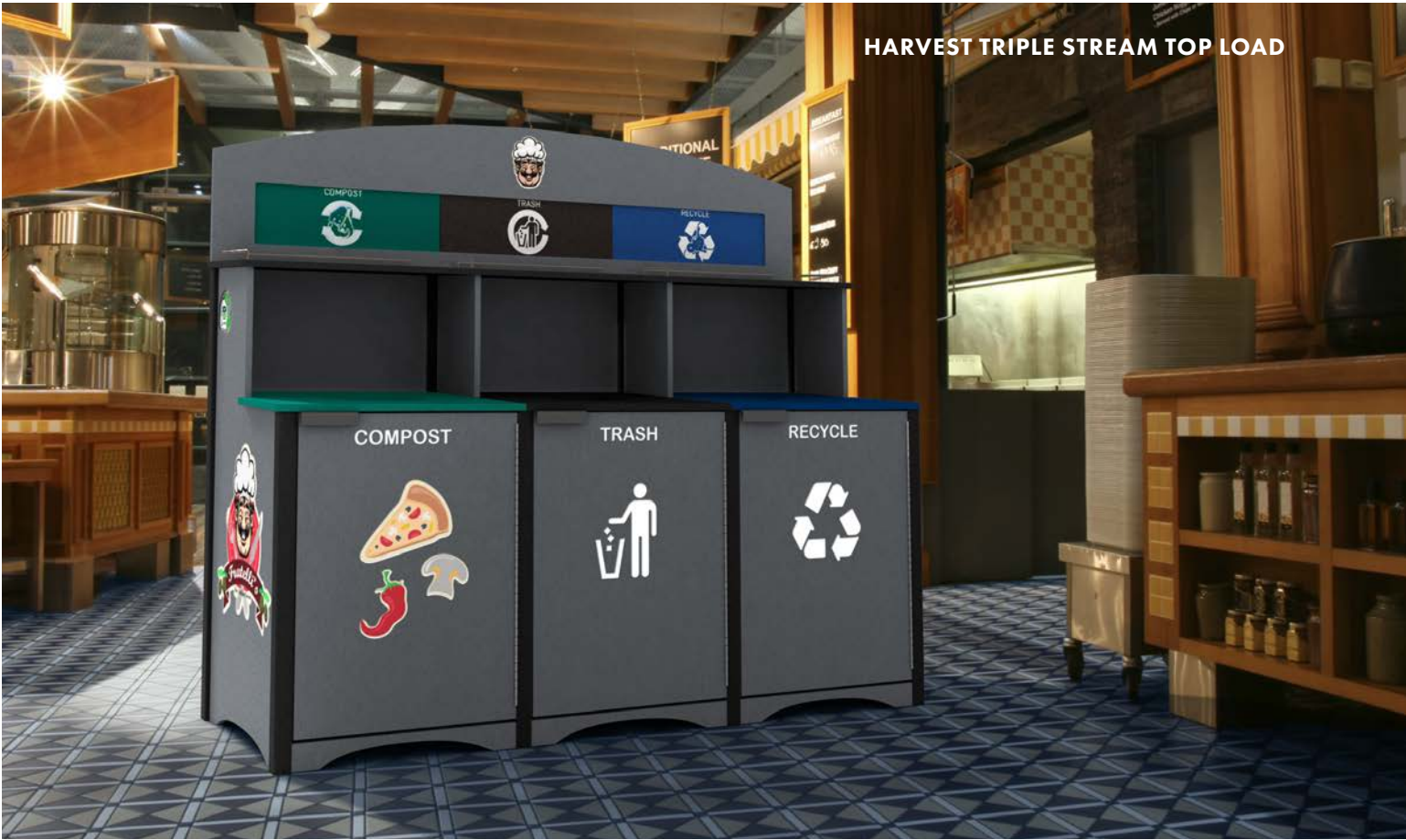
SHERWOOD TRIPLE STREAM FRONT LOAD

ROLL-OUT CART ENCLOSURES

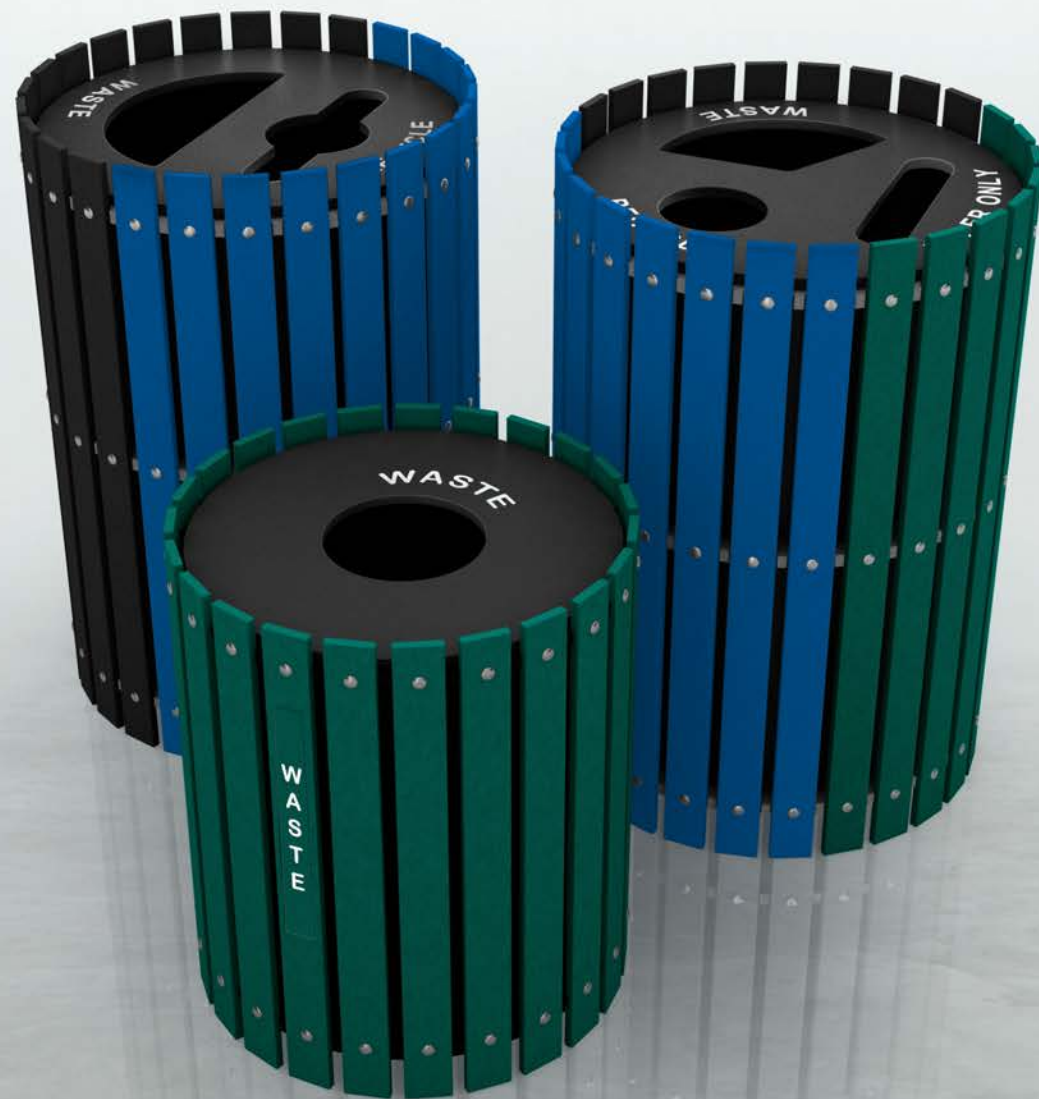


nex.terra

HARVEST COLLECTION



ROUNDS COLLECTION



nex.terra

E-CYCLER COLLECTION



WASTE & RECYCLE SPECIFICATIONS

Built from four standard footprints, our waste and recycle bins come in a variety of sizes and configurations. The wide range of options allows for the ability to tailor your waste and recycle solution to every area of your facility.

SUPERIOR COLLECTION

TOP LOAD (W" X D" X H")				FRONT LOAD (W" X D" X H")			
CAPACITY	SINGLE	DOUBLE	TRIPLE	CAPACITY	SINGLE	DOUBLE	TRIPLE
10 gal	15" x 15" x 35"	28" x 15" x 35"	40" x 15" x 35"	10 gal	15" x 15" x 40"	28" x 15" x 40"	40" x 15" x 40"
22 gal	15" x 24" x 40"	28" x 24" x 40"	40" x 24" x 40"	22 gal	15" x 24" x 45"	28" x 24" x 45"	40" x 24" x 45"
26 gal	21" x 21" x 35"	40" x 21" x 35"	58" x 21" x 35"	26 gal	21" x 21" x 40"	40" x 21" x 40"	58" x 21" x 40"
32 gal	21" x 21" x 40"	40" x 21" x 40"	58" x 21" x 40"	32 gal	21" x 21" x 45"	40" x 21" x 45"	58" x 21" x 45"
38 gal	24" x 24" x 35"	46" x 24" x 35"	67" x 24" x 35"	38 gal	24" x 24" x 40"	46" x 24" x 40"	67" x 24" x 40"
45 gal	24" x 24" x 40"	46" x 24" x 40"	67" x 24" x 40"	45 gal	24" x 24" x 45"	46" x 24" x 45"	67" x 24" x 45"
55 gal	24" x 24" x 44"	46" x 24" x 44"	67" x 24" x 44"	55 gal	24" x 24" x 48"	46" x 24" x 48"	67" x 24" x 48"

PIONEER COLLECTION

TOP LOAD (W" X D" X H")				FRONT LOAD (W" X D" X H")			
CAPACITY	SINGLE	DOUBLE	TRIPLE	CAPACITY	SINGLE	DOUBLE	TRIPLE
10 gal	14" x 14" x 32"	27" x 14" x 32"	39" x 14" x 32"	10 gal	14" x 14" x 40"	27" x 14" x 40"	39" x 14" x 40"
22 gal	14" x 24" x 45"	27" x 24" x 45"	39" x 24" x 45"	22 gal	14" x 24" x 45"	27" x 24" x 45"	39" x 24" x 45"
26 gal	20" x 20" x 32"	39" x 20" x 32"	57" x 20" x 32"	26 gal	20" x 20" x 40"	39" x 20" x 40"	57" x 20" x 40"
32 gal	20" x 20" x 37"	39" x 20" x 37"	57" x 20" x 37"	32 gal	20" x 20" x 45"	39" x 20" x 45"	57" x 20" x 45"
38 gal	24 "x 24" x 32"	45" x 24" x 32"	67" x 24" x 32"	38 gal	24" x 24" x 40"	45" x 24" x 40"	67" x 24" x 40"
45 gal	24" x 24" x 37"	45" x 24" x 37"	67" x 24" x 37"	45 gal	24" x 24" x 45"	45" x 24" x 45"	67" x 24" x 45"
55 gal	24" x 24" x 41"	45" x 24" x 41"	67" x 24" x 41"	55 gal	24" x 24" x 49"	45" x 24" x 49"	67" x 24" x 49"

BERKELEY COLLECTION

TOP LOAD (W" X D" X H")				FRONT LOAD (W" X D" X H")			
CAPACITY	SINGLE	DOUBLE	TRIPLE	CAPACITY	SINGLE	DOUBLE	TRIPLE
10 gal	15" x 15" x 31"	27" x 15" x 31"	40" x 15" x 31"	10 gal	15" x 15" x 38"	27" x 15" x 38"	40" x 15" x 38"
22 gal	15" x 24" x 36"	27" x 24" x 37"	40" x 24" x 36"	22 gal	15" x 24" x 43"	27" x 24" x 43"	40" x 24" x 43"
26 gal	21" x 20" x 31"	39" x 21" x 32"	58" x 20" x 31"	26 gal	21" x 20" x 38"	39" x 21" x 38"	58" x 20" x 38"
32 gal	21" x 20" x 36"	39" x 21" x 37"	58" x 20" x 36"	32 gal	21" x 20" x 43"	39" x 21" x 43"	58" x 20" x 43"
38 gal	24" x 24" x 31"	46" x 24" x 32"	68" x 24" x 31"	38 gal	24" x 24" x 38"	46" x 24" x 38"	68" x 24" x 38"
45 gal	24" x 24" x 36"	46" x 24" x 37"	68" x 24" x 36"	45 gal	24" x 24" x 43"	46" x 24" x 43"	68" x 24" x 43"
55 gal	24" x 24" x 39"	46" x 24" x 40"	68" x 24" x 39"	55 gal	24" x 24" x 47"	46" x 24" x 47"	68" x 24" x 47"

COLOR OPTIONS



GREEN



BLACK



TAN



WHITE



BROWN



BLUE



CARAMEL



GRAY



NAVY



AUBURN

SHERWOOD COLLECTION

TOP LOAD (W" X D" X H")				FRONT LOAD (W" X D" X H")			
CAPACITY	SINGLE	DOUBLE	TRIPLE	CAPACITY	SINGLE	DOUBLE	TRIPLE
10 gal	15" x 15" x 32"	28" x 15" x 32"	40" x 15" x 32"	10 gal	15" x 15" x 40"	28" x 15" x 40"	40" x 15" x 40"
22 gal	15" x 24" x 37"	28" x 24" x 37"	40" x 24" x 37"	22 gal	15" x 24" x 45"	28" x 24" x 45"	40" x 24" x 45"
26 gal	21" x 21" x 32"	40" x 21" x 32"	58" x 21" x 32"	26 gal	21" x 21" x 40"	40" x 21" x 40"	58" x 21" x 40"
32 gal	21" x 21" x 37"	40" x 21" x 37"	58" x 21" x 37"	32 gal	21" x 21" x 45"	40" x 21" x 45"	58" x 21" x 45"
38 gal	24" x 24" x 32"	46" x 24" x 32"	68" x 24" x 32"	38 gal	24" x 24" x 40"	46" x 24" x 40"	68" x 24" x 40"
45 gal	24" x 24" x 37"	46" x 24" x 37"	68" x 24" x 37"	45 gal	24" x 24" x 45"	46" x 24" x 45"	68" x 24" x 45"
55 gal	24" x 24" x 41"	46" x 24" x 41"	68" x 24" x 41"	55 gal	24" x 24" x 49"	46" x 24" x 49"	68" x 24" x 49"

ROLL-OUT CART ENCLOSURE

TOP LOAD (W" X D" X H")			FRONT LOAD (W" X D" X H")		
CAPACITY	SINGLE	DOUBLE	CAPACITY	SINGLE	DOUBLE
35 gal	30" x 30" x 41"	58" x 30" x 47"	35 gal	30" x 30" x 56"	58" x 30" x 56"
65 gal	35" x 37" x 48"	67" x 37" x 48"	65 gal	35" x 37" x 57"	67" x 37" x 57"

ALBANY COLLECTION *

TOP LOAD (W" X D X H")			
CAPACITY	SINGLE	DOUBLE	TRIPLE
10 gal	18" x 15" x 32"	29" x 15" x 32"	44" x 15" x 32"
26 gal	25" x 20" x 32"	42" x 20" x 32"	63" x 20" x 32"
32 gal	25" x 20" x 37"	42" x 20" x 37"	63" x 20" x 37"

*Patent Protected

HARVEST COLLECTION

TOP LOAD (W" X D" X H")			
CAPACITY	SINGLE	DOUBLE	TRIPLE
26 gal	21" x 21" x 45"	39" x 21" x 45"	58" x 21" x 45"
32 gal	21" x 21" x 50"	40" x 21" x 50"	58" x 21" x 50"
38 gal	24" x 24" x 45"	46" x 24" x 45"	68" x 24" x 45"
45 gal	24" x 24" x 50"	46" x 24" x 50"	68" x 24" x 50"
55 gal	24" x 24" x 56"	46" x 24" x 56"	68" x 24" x 56"

ROUNDS COLLECTION

CAPACITY	(DIA" X H")
10 gal	18" x 20"
20 gal	22" x 28"
32 gal	25" x 29"
40 gal	28" x 31"
55 gal	28" x 37"

E-CYCLER COLLECTION

SIZE	(W" X D" X H")
Mini Triple	21" x 21" x 38"
Mini Quad	21" x 21" x 43"
Standard Triple	26" x 21" x 46"
Standard Quad	26" x 21" x 58"



888-948-3772
WWW.NEX-TERRA.COM